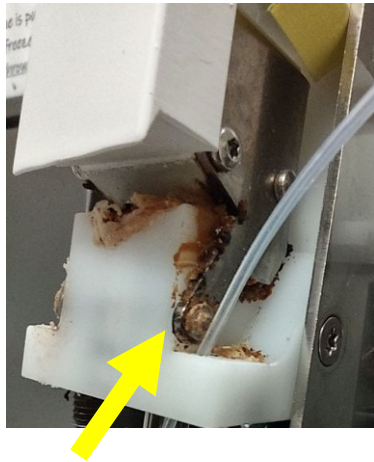
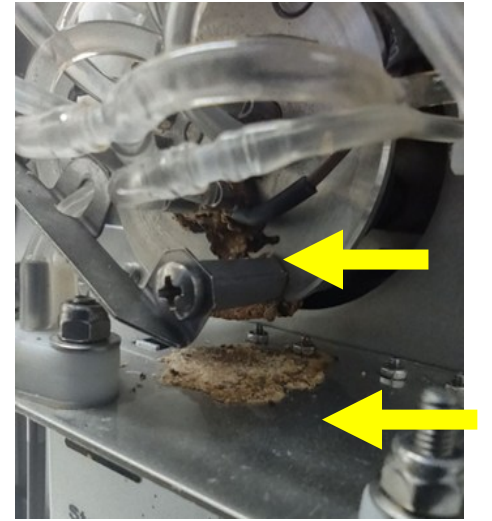
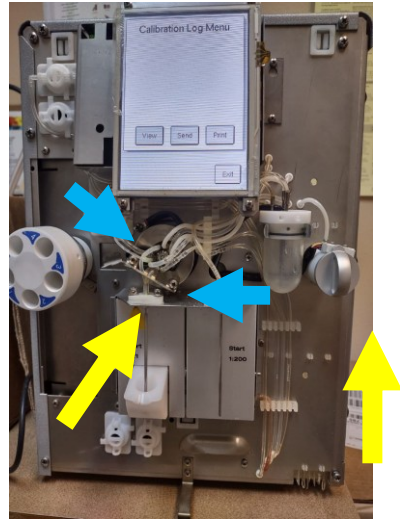


"Is Your Medonic Hematology Analyzer Showing These Warning Signs? Check These Key Areas Now!"

Detach the front cover according to the steps outlined below.



1. Firmly **grasp** the edges of the plastic front cover and apply steady, gentle pressure while **pulling** it toward you to remove it, as shown in the pictures.

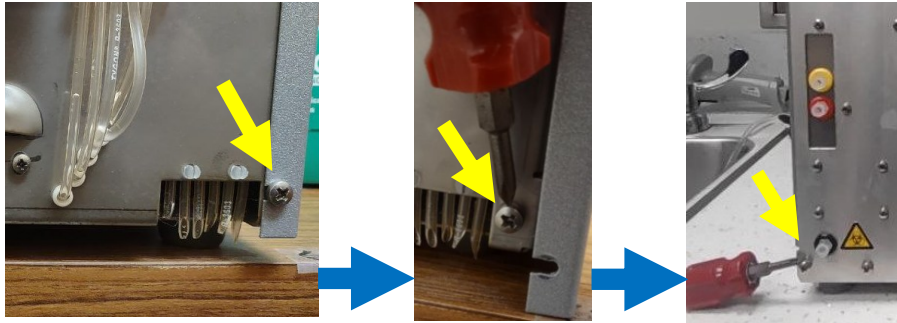
2. Once the front cover is off, **inspect** the interior for leaks, debris, or salty deposits. **Pay close attention** to the areas indicated by the arrows.

For assistance and preventive maintenance, Call PLES at 956-739-7749 or email your concerns and questions to CBCDiagnostics@gmail.com. - PhysiciansLES@gmail.com

Continue to the next page. ➡

Remove the right-side cover panel following the instructions below.

"NOTE: If you do not have the necessary tool to remove the right-side cover, skip steps 3 and 4, and proceed with steps 5 and 6."



3. Locate the Philips/Torx T-20 screw on the lower right front side. **Loosen this screw**, then move to the lower right back side and loosen that screw as well. Next, **slide the right-side panel downward** while pulling it to the right to remove it, as shown in the pictures.

4. Once the right-side cover is detached, **inspect the interior** for leaks, debris, or salty deposits. Pay close attention to the areas indicated by the arrows.

5. **Check the sensors** (see pictures) for the **Diluent** and **Lytic** pickup tubes for signs cracks around the sensors.

6. **Reinstall** the right-side cover panel and front cover by following the instructions in reverse order.

